



Moor Allerton Hall

Prospectus



‘Giving children the roots to grow and the wings to fly’



Welcome:

Welcome to Moor Allerton Hall Primary School - a school which represents the wonderful diversity of community across Leeds. We are an expanding school moving towards 3 form entry across all year groups by 2023. Although we are growing to meet the need in the local area, we pride ourselves on the positive relationships we have with our families and the ‘personal touch’ feel of a small school that we have maintained through the expansion by knowing all our children well.

We are a school that values your child as a whole person, with a curriculum that is rigorous in developing academic skills but also addresses development of relationships, and understanding of issues, emotions and wellbeing. Our curriculum is designed with the intention of preparing our children for the future by helping them to value themselves and others, understand the world around them, communicate well, appreciate beauty and engage in the modern and future world.

Ofsted judged us to be a good school in September 2019, recognising the improvement journey we have been on and our ambition and capacity to move on towards excellence.

I know that choosing a school for your child is one of the most important decisions you make as parents and carers. I encourage you to get to know us by visiting our website and Facebook pages and whenever possible, come and visit. I look forward to welcoming you to become part of the Moor Allerton Hall family.

Lesley McKay
Headteacher
Moor Allerton Hall

Moor Allerton Hall: Our Core Values



1 We are a learning school

We want children to learn how to learn as well as gain the building bricks of essential knowledge. 'Be a great learner' is one of the 3 key themes of the Moor Allerton Hall Way and we teach children our 6 learning muscles of how to do this. We help children to develop a growth mindset where it is ok to aim high, grapple with learning, make mistakes and learn from them.

We have challenged ourselves to continue to develop our curriculum to be relevant to our children's lives and have added strands of learning such as Climate Change and Black Lives Matter. We use the latest technology to involve all children in home learning.

In our school, teachers are involved in learning too and we use research projects to continue to refine our good practice, including applying the latest approaches to embed knowledge into long term memory.

'Pupils...say they get help to develop 'mindset muscles'. They explained this means building skills such as independence, resilience and perseverance. They know that these will be useful throughout their lives.' - Ofsted 2019

2 We are nurturing

We are a nurturing school who prepare our children to manage the real world by being resilient, independent, respectful and caring individuals. We have been awarded the Silver School Mental Health Award through Leeds Beckett University, recognising our work with the whole community surrounding their Mental Health and Wellbeing.

Our Golden Thread runs through the school placing importance on the whole child through the teaching of respect for British Values, Black Lives Matter, LGBTQ and Mental Health through discrete teaching and assembly themes linked to the PSHCE program.

We have a strong pastoral team with a Behaviour Support Worker, Learning Mentors and a Family Support Worker who all support children and their families.

3 We are inclusive and communication friendly

We are an inclusive and communication friendly school. The city's provision for Deaf and Hearing-impaired primary-aged children is based at our school. Consequently, our pupils will have deaf peers and the opportunity to learn some British Sign language. We have excellent provision for a group of pupils with a range of high level special needs.

Children who need extra provision are well supported including through our specialist speech and language programmes or visual resources to support learning. Our school was the first in Leeds to be awarded the Communication Friendly School Award and our classrooms are set up to support children with communication difficulties.

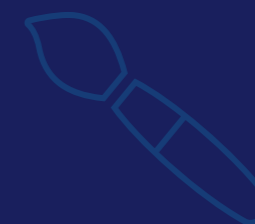
We maintain a high level of challenge for all of our children through our 'High Flier' activities in class. National data shows our higher ability children make better than average progress compared with their higher ability peers nationally.

4 We are creative and ambitious

We like to make learning memorable by planning in regular trips and visitors to class linked to our curriculum work. Year 5 and 6 each have a residential trip accessible to all our older children. We know how important the arts are to the development of the whole child and have an arts focused topic in every year group on top of the regular art, music and drama skills work which happens throughout the year.

Our pupils have a voice in school organisation and learn leadership skills through school council work, sports ambassadors and a house system run by the children themselves. There are a range of after school clubs on offer to enrich the school day including gymnastics, music groups and a wide range of sports including archery and fencing.

Our football team are league winners and we are regular finalists in the annual Leeds City Debating Competition.





5 We are a community

We like to keep our families involved in school life through regular parent/carer events to share what has been happening in school and daily updates through our busy Facebook pages. We regularly involve the whole school in charity events and school fundraising like our annual Moor Allerton Hall's Got Talent Show and a fantastic summer fair run by our PTA, Friends of Moor Allerton Hall.

At our school, we help children to understand relevant current affairs, giving them the chance to get involved and make a difference. Our 2019-20 Climate Crisis protests made the local news with our Student Environment group speaking in public at Leeds Town Hall. We know that working families need good wrap around care facilities so as a school our own experienced team provide this on the school site.

'Pupils are self-confident. They are proud to be part of a school community that welcomes and values everyone.'

- Ofsted 2019



6 We are a good school

We were judged Good by Ofsted in September 2019. Since then, we have had the addition of a fantastic new extension building, including a second hall and specialist Design Technology room with cooking facilities. Our additional play facilities include a Multi-Use Games Area, an excellent reception outdoor play space and additional green space to develop outdoor learning across school.

In key stage 2, we have excellent links with the local high schools and regularly have computer and science lessons with high school staff.



The Moor Allerton Hall Way

Our school and its values are based on good relationships between staff, children and their families. Our behaviour policy is based on the Moor Allerton Hall Way: the 3 lifelong values we believe are key to learning and developing at our school. We use daily or weekly class targets to focus on various aspects of these values; to help children understand what they really mean in practice and we celebrate with children who go 'above and beyond'. We use restorative practice to support children to manage their behaviour. We have high expectations of behaviour and a calm learning atmosphere which was recognised by Ofsted.

'Pupils of all ages and abilities want to learn. They work hard. They are not put off when they find work difficult.'

- Ofsted 2019

The Moor Allerton Hall Way

Be kind and respectful.

Be a thinker and a problem solver.

Be a great learner.

Above and beyond...

We are working on...





Moor Allerton Hall Primary School

Lidgett Lane, Roundhay, Leeds, LS17 6QP

Telephone 0113 336 8350

moorallertonhall.leeds.sch.uk | office@moorallertonhall.leeds.sch.uk